

## 3 Atkins Drive, Romaine

This fact sheet provides information about new social and affordable housing for 3 Atkins Drive, Romaine.

### What is proposed for the site?

The Atkins Drive development will include 18 two-storey, two-bedroom units with a mix of social housing and affordable rentals.

The units will be designed for comfort, safety and accessibility, catering to people of all ages and abilities.

The units will be built to silver level of the Livable Housing Design Guidelines under the National Construction Code ([ncc.abcb.gov.au/resource/standard/livable-housing-design-standard](http://ncc.abcb.gov.au/resource/standard/livable-housing-design-standard)). They will have high energy-efficiency, achieving a 7-star energy rating, so the units will require less heating and cooling, helping to reduce both energy costs and environmental impact.

The design can be seen at the end of this fact sheet.

### Why is more housing needed?

There is high demand for social and affordable housing with many Tasmanians in need of assistance.

3 Atkins Drive, Romaine, is well-located land that presents a significant opportunity to address the pressing need for housing in the community.

To help meet housing demand, Homes Tasmania is delivering more medium-density developments to deliver more homes that are affordable and provide contemporary living options.

### What is social and affordable housing?

Homes Tasmania is responsible for delivering social and affordable housing options throughout Tasmania. The Atkins Drive development will provide a mix of social and affordable rental homes for Tasmanians.

Social housing is provided by the government (public housing) and non-government organisations (community housing), with rent generally set around 25 per cent of household income plus Commonwealth Rent Assistance where applicable.

Affordable rentals provide rents at below median market value.

## When will construction begin?

The development application was approved by Burnie City Council in October 2025.

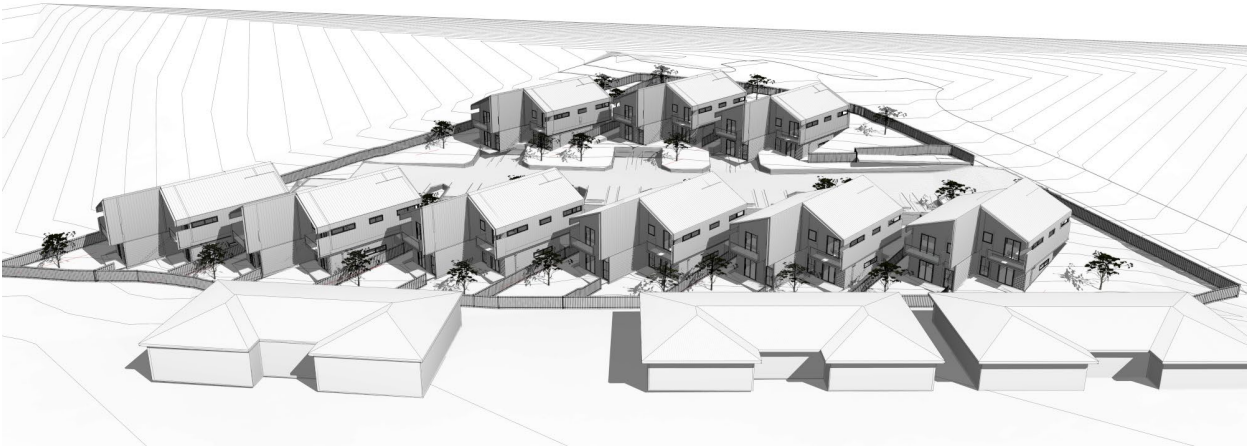
The project is funded by Homes Tasmania and the Australian Government under the Housing Australia Future Fund.

Homes Tasmania will procure a builder for the development through our builders panels with construction to begin when a building contract is in place.

## Who will manage the units once complete?

The development will be managed by one of Tasmania's community housing providers.

## Proposed site plan



## For more information

If you would like more information, or would like to provide feedback on the development, please email [HousingProjects@homes.tas.gov.au](mailto:HousingProjects@homes.tas.gov.au)

Updated 30 October 2025